

HUSKYLINERS[®]

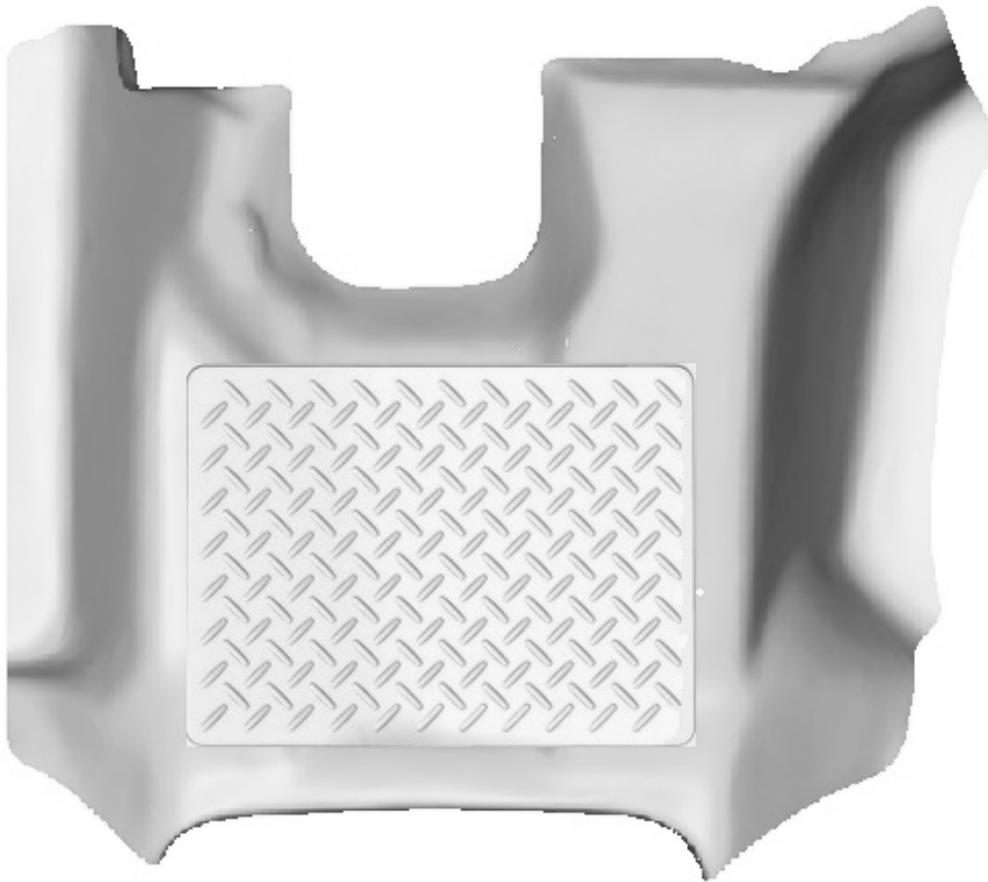
weatherBEATER

CARE AND USE INSTRUCTIONS

Thank you for selecting a WeatherBeater[®] Floor Liner from Winfield Consumer Products. Your new center hump liner is custom molded to fit your Ford Super Duty Super Cab or Crew Cab truck without a manual transfer case (4X4) shifter. The liner is made to take the place of your factory floor mat. **For correct fit, it is necessary to remove the factory floor mats before installing your new floor liner.** However, do not remove the factory-installed carpeting.

Your liner is made from an engineering resin that is lightweight and extremely tough and durable. The easiest way to clean your liner is with a damp cloth or sponge. If using a cleaner, 409[®] or Glass Plus[®] work well. Use of Armor All[®], Son-of-a-Gun[®] or similar items is discouraged as these products make the liner slick.

INSTALLATION INSTRUCTIONS FOR YOUR SUPER DUTY FORD F250/F350/F450 SUPER CAB & CREW CAB CENTER HUMP LINER



TO EASE INSTALLATION OF YOUR CENTER HUMP LINER, SLIDE THE FRONT ROW SEATS AS FAR BACK AS THEY CAN BE ADJUSTED BEFORE BEGINNING INSTALLATION. ONCE THE LINER IS IN PLACE, REPOSITION THE FRONT ROW SEATS AS NEEDED.